

# Verified Medical Patient Scales

Soehnle Product Portofolio



**FRESENIUS  
MEDICAL CARE**

# Introduction

Starting from the first dialysis treatment, medical patient scales have been an integral part of almost all the dialysis therapies that we offer to our patients. The patient's weight must always be measured before and after each treatment, whether it is in-centre or home dialysis.

To achieve the best integration in the care process, the in-centre medical patient scales are connected to the clinical therapy data management system.

The medical patient scales from Soehnle have a strong international position in our NephroCare and customer clinics and come with an established IT interface to our TDMS system for in-centre dialysis. With the appropriate training and certification, technical services can be offered by a local Fresenius Medical Care organisation, and in many regions, by Soehnle or an established local service partner.

Products that are well-integrated in the customer systems and processes with the associated technical service allow Fresenius Medical Care to offer a better range of products and services from one single source, which strengthens our relationship with our customers, providing them with solutions and creating value.

Soehnle offers a variety of models for in-centre and home use. All patient scales offered in this brochure are medical devices class I according to EU directive 93/42/EEC (MDD) and comply with the accuracy class III according to EN 45501, and all except for the home therapy products feature an IT interface (RS 232), allowing for an optional connection with the therapy data management system (TDMS) via UniDataLink (UDL).

## **Our partner**

### **Soehnle Industrials Solutions GmbH**

Soehnle Industrial Solutions is one of the leading European companies in professional weighing and measuring technology. In addition to proven standard scales for medical and health requirements, Soehnle also offers customised products that are tailored to customer's needs.



Soehnle Industrial Solutions primarily develops and manufactures its products in Germany, which are sold all over the world. As a medium-sized company, Soehnle stands for a strong brand, high-quality products and a customer-focused service.



# Soehnle 7730 – (Home) Column Scale

The verified Soehnle 7730 is a compact column scale with a solid, easy-to-clean platform. The terminal enables 5-button operation with a programmable functional key for the manual input of tare values and an auto-off function to save energy. The scales are optionally available to order with a rechargeable battery and alibi memory, or with small wheels for easy transport.



- Accuracy class III (EN 45501); medical device class I (MDD)
- Terminal 3710 with installed RS232 interface for secure data transfer to e.g. TDMS (not for home use)
- Battery operation (for home use)
- Optional battery operation (not for home use)

Product	
<b>TMD000231</b>	Soehnle 7730 verified column scale
<b>TMD000261</b>	Soehnle 7730 verified home column scale
Options	
<b>5072361</b>	Soehnle 2792 alibi memory
<b>5072381</b>	Soehnle wheels for column scale 7730/7830
<b>5072391</b>	Soehnle battery for column scale 7730/7830

Technical Data:	
<b>Measuring range:</b>	2–300 kg
<b>Division:</b>	100 g
<b>Dimensions (W x D x H):</b>	365 x 490 x 1140 mm
<b>Product weight:</b>	15.6 kg
<b>Digit height (LCD display):</b>	16 mm
<b>Unit:</b>	kg or lb



# Soehnle 7702 – Chair Scale

The verified Soehnle 7702 chair scale combines a ergonomically shaped and easy-to-clean seat with a robust design for the straightforward weighing of patients with limited mobility. Its arm and foot rests are hinged and its rear wheels are lockable for comfortable use. The chair wheel is equipped with a rechargeable battery and integrated charger for added mobility. The terminal enables 5-button operation with a programmable functional key for the manual input of tare values and an auto-off function to save energy.



- Accuracy class III (EN 45501); medical device class I (MDD)
- Terminal 3710 with installed RS232 interface for secure data transfer to e.g. TDMS

## Product

**TMD000241** Soehnle 7702 verified chair scale

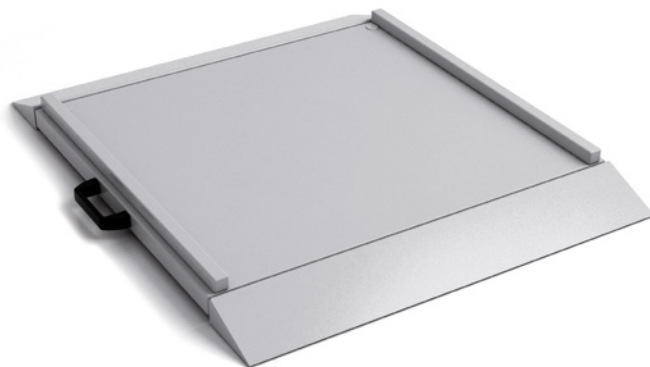
## Technical Data:

<b>Measuring range:</b>	0.1–200 kg
<b>Division:</b>	100 g
<b>Dimensions (W x D x H):</b>	580 x 1100 x 930 mm
<b>Product weight:</b>	25 kg
<b>Digit height (LCD display):</b>	16 mm
<b>Unit:</b>	kg or lb

# Soehnle 7708 – Wheelchair Platform Scale

The verified Soehnle 7708 scale features a flat platform for the easy weighing of patients in a wheelchair or on a chair as well as for standing patients. With its two aluminum ramps, moving onto or off the scale is easy and user-friendly. Thanks to its light weight and carry handle, the scale is always transportable. The terminal enables 5-button operation with a programmable functional key for the manual input of tare values and an auto-off function to save energy. A wall bracket for the terminal is included.

- Accuracy class III (EN 45501); medical device class I (MDD)
- Terminal 3710 with installed RS232 interface for secure data transfer to e.g. TDMS
- Includes two aluminium drive-on ramps



Floor stand



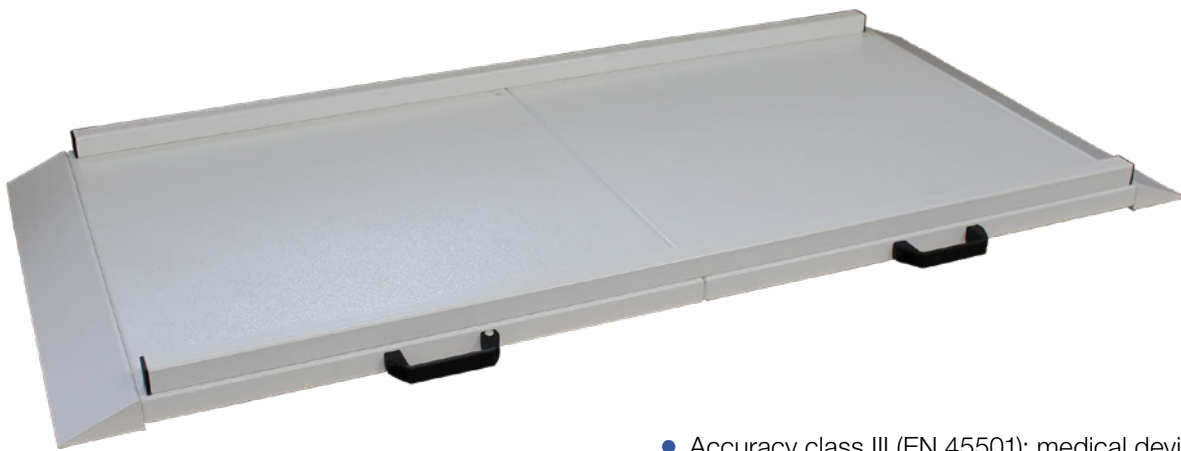
Support handrails (set)

Product	
<b>TMD000211</b>	Soehnle 7708 verified platform scale
Options	
<b>5072361</b>	Soehnle 2792 alibi memory
Accessories	
<b>TMD000461</b>	Soehnle handrail 1 pc. for 7708/7808
<b>TMD000471</b>	Soehnle handrail-set 3 pc. for 7708/7808
<b>TMD000481</b>	Soehnle side guide set for 7708/7808
<b>TMD000491</b>	Soehnle terminal bracket for handrails
<b>TMD000501</b>	Soehnle SST floor stand for terminal
<b>TMD000511</b>	Soehnle white floor stand for terminal

Technical Data:	
<b>Measuring range:</b>	0.1–300 kg
<b>Division:</b>	100 g
<b>Dimensions (W x D x H):</b>	1070 x 880 x 55 mm
<b>Product weight:</b>	19 kg
<b>Digit height (LCD display):</b>	16 mm
<b>Unit:</b>	kg or lb

# Soehnle 7708 – Extra Large Platform Scale

The verified Soehnle 7708 large platform scale features a flat platform for the easy weighing of patients in a wheelchair or on a chair. With its two aluminum ramps, moving onto or off the scale is easy and user-friendly. Thanks to its light weight and carry handle, the scale is always transportable. The terminal 3020 features an alphanumeric keyboard for inputting organisational data and an auto-off function to save energy. A wall bracket for the terminal is also included.



- Accuracy class III (EN 45501); medical device class I (MDD)
- Terminal 3710 with installed RS232 interface for secure data transfer to e.g. TDMS
- Includes two aluminium ramps and two lateral guides

Product	
<b>TMD000251</b>	Soehnle 7708 verified large platform scale
Options	
<b>5072361</b>	Soehnle 2792 alibi memory
Accessories	
<b>TMD000501</b>	Soehnle SST floor stand for terminal
<b>TMD000511</b>	Soehnle white floor stand for terminal

Technical Data:	
<b>Measuring range:</b>	2–300 kg
<b>Division:</b>	100 g
<b>Dimensions (W x D x H):</b>	2140 x 880 x 55 mm
<b>Product weight:</b>	40 kg
<b>Digit height (LCD display):</b>	16 mm
<b>Unit:</b>	kg or lb

**Manufacturer:**

Soehnle Industrial Solutions GmbH  
Gaidorfer Straße 6  
71522 Backnang  
Phone +49 7191/34 53-220  
Email: [info@soehnle-professional.com](mailto:info@soehnle-professional.com)



**FRESENIUS  
MEDICAL CARE**

Head office: Fresenius Medical Care Deutschland GmbH · 61346 Bad Homburg v. d. H. · Germany  
Phone: +49 (0) 6172-609-0 · Fax: +49 (0) 6172-609-2191  
[www.FreseniusMedicalCare.com](http://www.FreseniusMedicalCare.com)