

# Gauged Medical Patient Scales

seca Product Portfolio



**FRESENIUS  
MEDICAL CARE**

# Introduction

Starting from the first dialysis treatment, medical patient scales have been an integral part of almost all the dialysis therapies that we offer to our patients. The patient's weight must always be measured before and after each treatment, whether it is in-centre or home dialysis.

To achieve the best integration in the care process, the in-centre medical patient scales are connected to the clinical therapy data management system.

The medical patient scales from seca have a strong international position in our NephroCare and customer clinics and come with an established IT interface to our TDMS system for in-centre dialysis. Technical services can be offered in many regions by seca or an established local service partner.

Products that are well-integrated in the customer systems and processes allow Fresenius Medical Care to offer a better range of products and services from one single source, thereby strengthening our relationship with our customers, providing them with solutions and creating value.

seca offers different models for in-centre and home use. All patient scales offered in this brochure comply with the accuracy class III according to EN 45501, and all (except for home therapy) will be delivered with IT-Interface (RS 232) for the possibility to connect to the Therapy Data Management System (TDMS) via UniDataLink (UDL).

## **Our partner**

**seca gmbh & co. kg**

Working with the same subject matter since 1840, seca is dedicated to providing high-precision, timeless modern scales and measuring systems. For more than 170 years seca have been paving the way for measuring and weighing, making seca the worldwide market leader in their field.

The worldwide service network currently consists of 10 seca branches and the medical technology service dealers who have received top training.





# seca 704 r – Column scale

Ascertaining the patient's weight is routine in everyday professional health care. seca has now developed the digital column scale 704 r for use wherever weighing has to be quick and simple. Determining the weight of patients, however heavy, is now child's play: the scale's design is compact but, at the same time, generous so that even heavy patients can be weighed comfortably.

The high capacity of 300 kg and the fully digital technology also ensure maximum weighing comfort. This scale is especially suitable for use in the general medical sectors. An integrated RS232 interface enables the reliable transmission of data to TDMS.



seca 704 r

*The heavy duty cast iron base is slip resistant with an anti-tip column design.*

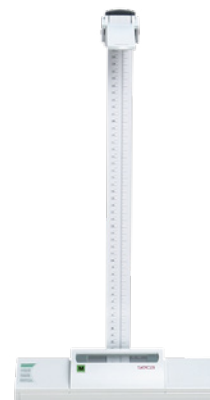
- with integrated RS232 interface for reliable data transfer to e.g. TDMS
- including seca 400 switch-mode power adapter

The telescopic measuring rod can be fitted at any time to many seca column scales. It has the same convenient eye level read out even for taller patients.

- Measuring range: 60–200 cm
- Graduation: 1 mm



*Practical castors permit mobile use.*



*Optional telescopic measuring rod.*

Product	
<b>TMD000301</b>	seca 704 r verified column scale
Optional	
<b>TMD000531</b>	seca 220 telescopic measuring rod for column scales

Technical Data:	
<b>Capacity:</b>	300 kg
<b>Graduation:</b>	50 g < 150 kg > 100 g
<b>Dimensions (W x H x D):</b>	360 x 930 x 520 mm
<b>Product weight:</b>	14.9 kg
<b>Accuracy class (EN 45501):</b>	III
<b>Medical device class (MDD):</b>	I m



# seca 799 – Home column scale

Versatile, low-maintenance and site-independent with economic battery operation – the seca 799 is ideal for daily use at home. With its transport castors, the column scale is also easy to move around. The seca 799 is equipped with several intelligent functions. For example, the BMI function permits a reliable evaluation of the nutritional condition of the patient. The column scale can also be fitted with the optional measuring rod seca 220 so that both height and weight can be determined in just one time-saving step.

- battery operation

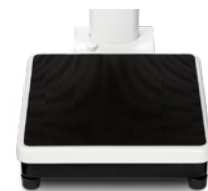


seca 799

*The optional measuring rod allows convenient weighing and measuring in one step.*



Display



*The slip resistant surface with an anti-tip column design provides for a safe and secure foothold.*

Product	
<b>TMD000331</b>	seca 799 verified home column scale
Optional	
<b>TMD000531</b>	seca 220 telescopic measuring rod for column scales

Technical Data:	
<b>Capacity:</b>	200 kg
<b>Graduation:</b>	100 g < 150 kg > 200 g
<b>Dimensions (W x H x D):</b>	294 x 831 x 458 mm
<b>Product weight:</b>	6.3 kg
<b>Digit height (LCD display):</b>	20 mm
<b>Accuracy class (EN 45501):</b>	III
<b>Medical device class (MDD):</b>	I m

# seca 685 r – Multifunctional scale

The patient can be safely and accurately weighed while standing, seated or in a wheelchair. No conversion is required. The stable handrail supports the standing patient, the integrated fold-down seat provides comfort for the seated patient, and the large platform (80 x 84 cm) accommodates a patient in a wheelchair. The weight of the wheelchair or walker is simply deducted with use of the pre-TARE function. Special attention has been given to making the scales easy to access and safe, with a stop barrier provided for the front wheels of the wheelchair. Furthermore, the seca 685 r is equipped with an integrated RS232 interface that provides for the reliable transmission of data to TDMS. Additional details: easy-to-read swiveling display can be turned toward the patient or caregiver, the practical HOLD function shows the weighing result after the patient has left the platform, the damping function delivers precise results, the nonslip rubber coating and handrail give a firm foothold and integrated transport castors make the scale mobile.

- with integrated RS232 interface for reliable data transfer to e.g. TDMS
- including 1 ramp, 3 handrails and 1 removable seat



seca 685 r



*Patient can stand or sit when being weighed.*



*The rotating display can be oriented towards the patient or medical personnel.*

Product	
<b>TMD000291</b>	seca 685 r verified multifunctional scale

Technical Data:	
<b>Capacity:</b>	300 kg
<b>Graduation:</b>	100 g < 200 kg > 200 g
<b>Dimensions (W x H x D):</b>	910 x 1.100 x 1.064 mm
<b>Product weight:</b>	59.5 kg
<b>Accuracy class (EN 45501):</b>	III
<b>Medical device class (MDD):</b>	I m

# seca 677 r – Platform scale

Stable, functional and mobile: thanks to its large platform and sturdy handrail, the seca 677 r is extremely versatile. Patients can be weighed while sitting in a wheelchair or on a chair. The handrail provides valuable support for people who are frail or can walk only with great difficulty. Its high load capacity makes the seca 677 r ideal for weighing very heavy patients. After use the scale can be folded up to save space. The sturdy locking device between rail and platform ensures that the seca 677 r stands safely even when folded. The handrail also serves as a handle when the scale is folded, allowing the scale to be moved around or stowed away effortlessly and quickly on its transport castors. Weighing is simple and user-friendly with the clearly designed, operable display at hip level, additional functions of TARE, Auto-HOLD, BMI and the integrated RS232 interface provides the reliable transmission of data to TDMS.

- with integrated RS232 interface for reliable data transfer to e.g. TDMS
- including 2 ramps and handrail



seca 677 r



Easy access



The scale can be folded for easy transport.

## Product

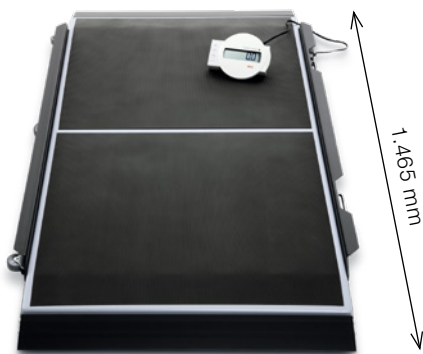
**TMD000281**      seca 677 r verified platform scale

## Technical Data:

<b>Capacity:</b>	300 kg
<b>Graduation:</b>	100 g < 200 kg > 200 g
<b>Dimensions (W x H x D):</b>	920 x 1.120 x 1.150 mm
<b>Product weight:</b>	38.0 kg
<b>Accuracy class (EN 45501):</b>	III
<b>Medical device class (MDD):</b>	I m

# seca 657 r – Large platform scale

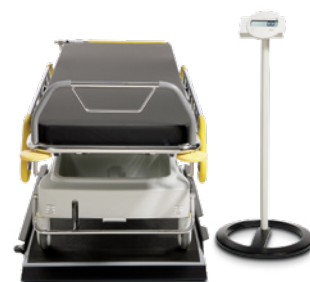
The especially large platform of the seca 657 r makes it possible to weigh patients on all commonly used stretchers. Patients can also be weighed while sitting in wheelchairs or on a chair. One characteristic of the seca 657 r is the memory function. This practical feature helps to lighten the workload especially in the emergency unit: first the total weight of the patient and stretcher or wheelchair is determined. The stretcher or wheelchair is then weighed separately and the net weight of the patient appears automatically on the display. A cable remote display with easy-to-read LCD figures is included in delivery. This display is operated intuitively and is equipped with many additional functions. With the pre-TARE function, the extra weight of a stretcher or wheelchair can be deducted directly from the total weight during the weighing process. With the BMI function, the nutritional condition of the patient can be determined. Thanks to its robust design and capacity of 300 kg, the seca 657 r can weigh even overweight persons with no problem at all. With the practical castors and integrated handles, the seca 657 r is also transportable for use in various locations. And an integrated RS232 interface provides for the reliable transmission of data to TDMS.



- with integrated RS232 interface for reliable data transfer to e.g. TDMS
- including seca 472 mobile stand for cable remote displays and 2 ramps



*With its transport castors and steering castor, the seca 657 can be manoeuvred easily*



*The free-standing display delivers comfortable read-out of measurements.*

Product	
<b>TMD000321</b>	seca 657 r verified large platform scale

Technical Data:	
<b>Capacity:</b>	300 kg
<b>Graduation:</b>	100 g < 200 kg > 200 g
<b>Dimensions (W x H x D):</b>	893 x 87 x 1.655 mm
<b>Product weight:</b>	46.2 kg
<b>Accuracy class (EN 45501):</b>	III
<b>Medical device class (MDD):</b>	I m



# seca 959 r – Chair scale

Care and comfort were kept in mind when designing this stable model with a circular steel tube frame. The comfortable seat provides a high level of safety while the swiveling armrests and adjustable footrests make the chair scale more user-friendly. The locking rear wheels provides that patients can feel safe to sit down and stand up at all times. The positioning of the large LCD display unit behind the chair permits intuitive operation of the TARE, HOLD and BMI functions. An integrated RS232 interface delivers the reliable transmission of data to TDMS. This mobile chair scale, which can be operated by a rechargeable battery or power plug in, provides enormous help in rehab, orthopaedics, dialysis and nursing homes. Its fine graduation of 50 grams is particularly valuable in paediatrics, allowing small children who cannot yet stand on their own to be weighed while seated.

- with integrated RS232 interface for reliable data transfer to e.g. TDMS



seca 959 r



*The armrests can also be folded away to allow patients better access from the side.*

Product	
<b>TMD000311</b>	seca 959 r verified chair scale

Technical Data:	
<b>Capacity:</b>	300 kg
<b>Graduation:</b>	50 g < 150 kg > 100 g < 250 kg > 200 g
<b>Dimensions (W x H x D):</b>	563 x 897 x 978 mm
<b>Product weight:</b>	24.5 kg
<b>Accuracy class (EN 45501):</b>	III
<b>Medical device class (MDD):</b>	I m

# seca 985 – Bed load cell scale

Always in use: The seca 985 facilitates the easy, gentle and precise weighing of bedridden patients and is an indispensable aid in dialysis and intensive care. Integrated lifts enable four load cells to be placed easily and effortlessly under the castors of an empty bed and the scale to be switched on. The weight of the empty bed is stored in the scale until the next time the scale is switched off. The previously determined weight of the bed (must be 250 kg or less) is deducted using the TARE function and the patient's precise weight is determined. In order to obtain the patient's measurements even if the power goes out, the bed scale is also equipped with a rechargeable battery. When not in use, the four bed lifts can be stored on the equipment trolley.

- including seca 460 RS232 interface adapter for reliable data transfer to e.g. TDMS
- including trolley



seca 985



*The patented lift mechanism permits placement of the load cells without any effort.*



Display

Product	
TMD000271	seca 985 verified bed load cell scale

Technical Data:	
<b>Capacity:</b>	500 kg
<b>Max. patient weight:</b>	250 kg
<b>Maximum bed weight:</b>	250 kg
<b>Graduation:</b>	100 g < 200 kg > 200 g
<b>Dimensions (W x H x D):</b>	520 x 927 x 562 mm
<b>Product weight:</b>	25.6 kg
<b>Accuracy class (EN 45501):</b>	III
<b>Medical device class (MDD):</b>	I m



**Manufacturer:**

seca gmbh & co. kg  
Hammer Steindamm 3–25  
22089 Hamburg  
Germany  
Telephone + 49 40 20 00 00 711  
exportsales.de@seca.com



**FRESENIUS  
MEDICAL CARE**

Head office: Fresenius Medical Care Deutschland GmbH · 61346 Bad Homburg v. d. H. · Germany  
Phone: +49 (0) 6172-609-0 · Fax: +49 (0) 6172-609-2191  
[www.FreseniusMedicalCare.com](http://www.FreseniusMedicalCare.com)