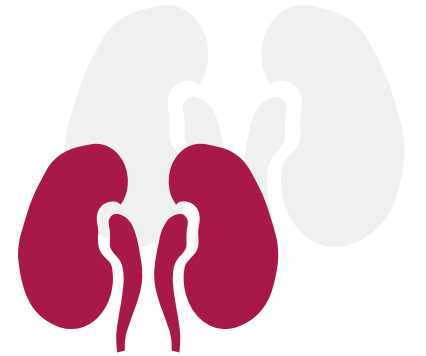




3.1

RENAL CARE CONTINUUM

FRANK W. MADDUX



Safe harbor statement:

This presentation includes certain forward-looking statements within the meaning of Section 27A of the U.S. Securities Act of 1933, as amended, and Section 21E of the U.S. Securities Act of 1934, as amended. Forward-looking statements are inherently subject to risks and uncertainties, many of which cannot be predicted with accuracy or might not even be anticipated. The Company has based these forward-looking statements on current estimates and assumptions which we believe are reasonable and which are made to the best of our knowledge. Actual results could differ materially from those included in the forward-looking statements due to various risk factors and uncertainties, including changes in business, economic or competitive conditions, changes in reimbursement, regulatory compliance issues, regulatory reforms, foreign exchange rate fluctuations, uncertainties in litigation or investigative proceedings, cyber security issues and the availability of financing. Given these uncertainties, readers should not put undue reliance on any forward-looking statements. These and other risks and uncertainties are discussed in detail in Fresenius Medical Care AG & Co. KGaA's (FMC AG & Co. KGaA) Annual Report on Form 20-F under the heading "Forward-Looking Statements" and under the headings in that report referred to therein, and in FMC AG & Co. KGaA's other reports filed with the Securities and Exchange Commission (SEC) and the Frankfurt Stock Exchange (Frankfurter Wertpapierbörse).

Forward-looking statements represent estimates and assumptions only as of the date that they were made. The information contained in this presentation is subject to change without notice and the company does not undertake any duty to update the forward-looking statements, and the estimates and assumptions associated with them, except to the extent required by applicable law and regulations.

If not mentioned differently the term net income refers to the net income attributable to the shareholders of Fresenius Medical Care AG Co. KGaA. The term EMEA refers to the region Europe, Middle East and Africa. Amounts are in Euro if not mentioned otherwise.



■ OUR COMMITMENT: ALLOW PATIENTS TO LIVE PURPOSEFUL LIVES WITH MEANING



INDIVIDUALS WITH CHRONIC KIDNEY DISEASE ARE DESTINED TO HAVE A **LIFE JOURNEY** REQUIRING BOTH **ACCESS TO MANY SERVICES AND SUPPORT THROUGH MULTIPLE PERSPECTIVES** IN ORDER TO NAVIGATE LIVING WITH ADVANCED KIDNEY DISEASE.

LIFE WITH KIDNEY DISEASE: A CONTINUUM

TREATMENT OPTIONS



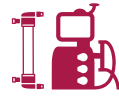
Transplant



At-Home
Peritoneal
Dialysis (PD)



At-Home
Hemodialysis
(HHD)



In-Center
Hemodialysis
(HD)



Supportive
Care

COMORBIDITIES

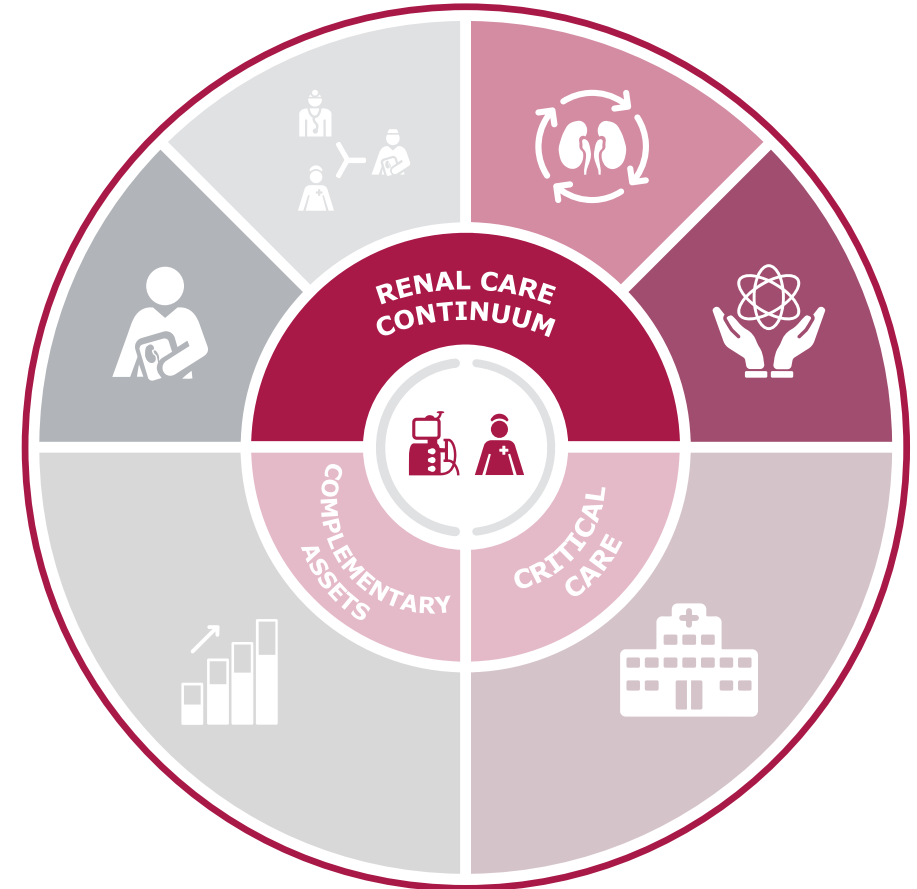
HYPERTENSION

DIABETES

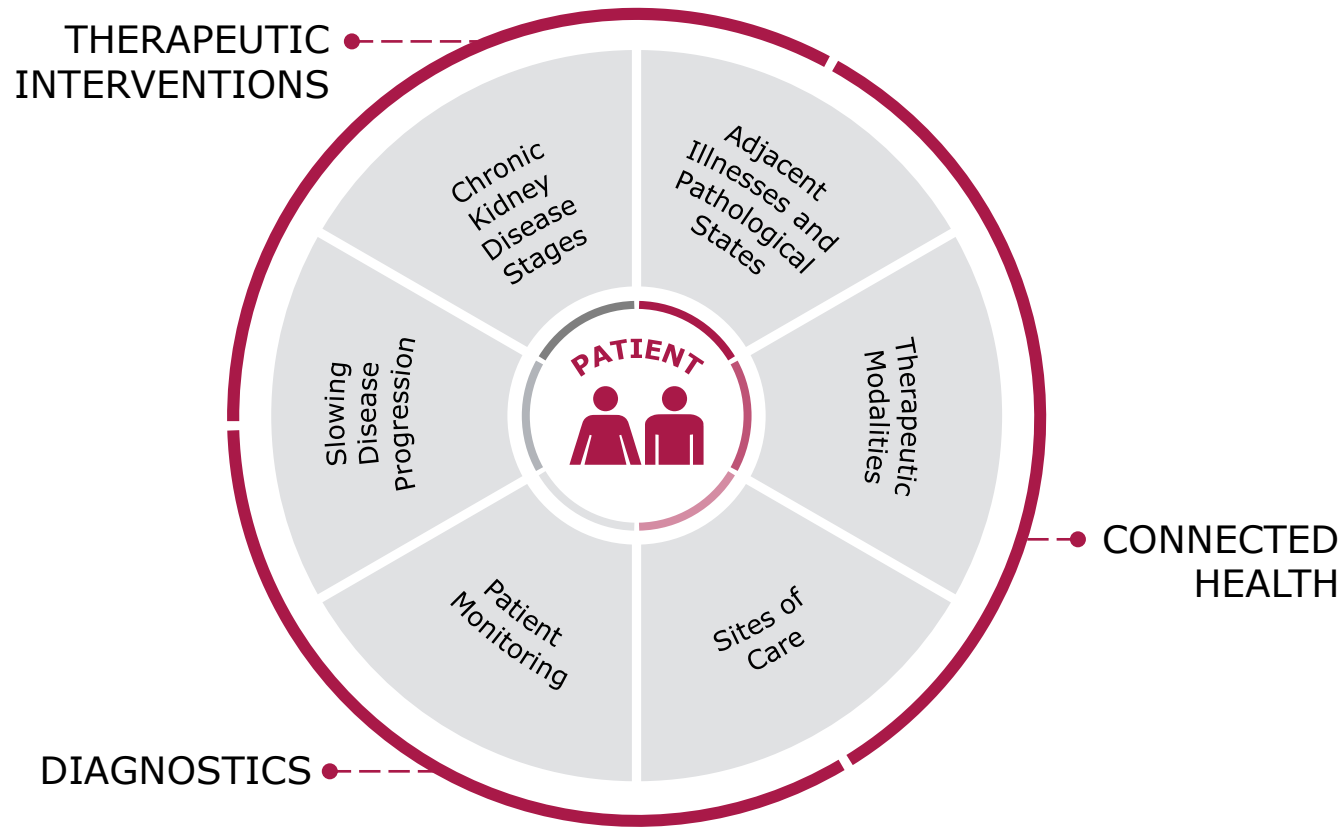
BEHAVIORAL PSYCHOLOGY

OBESITY

CARDIOVASCULAR



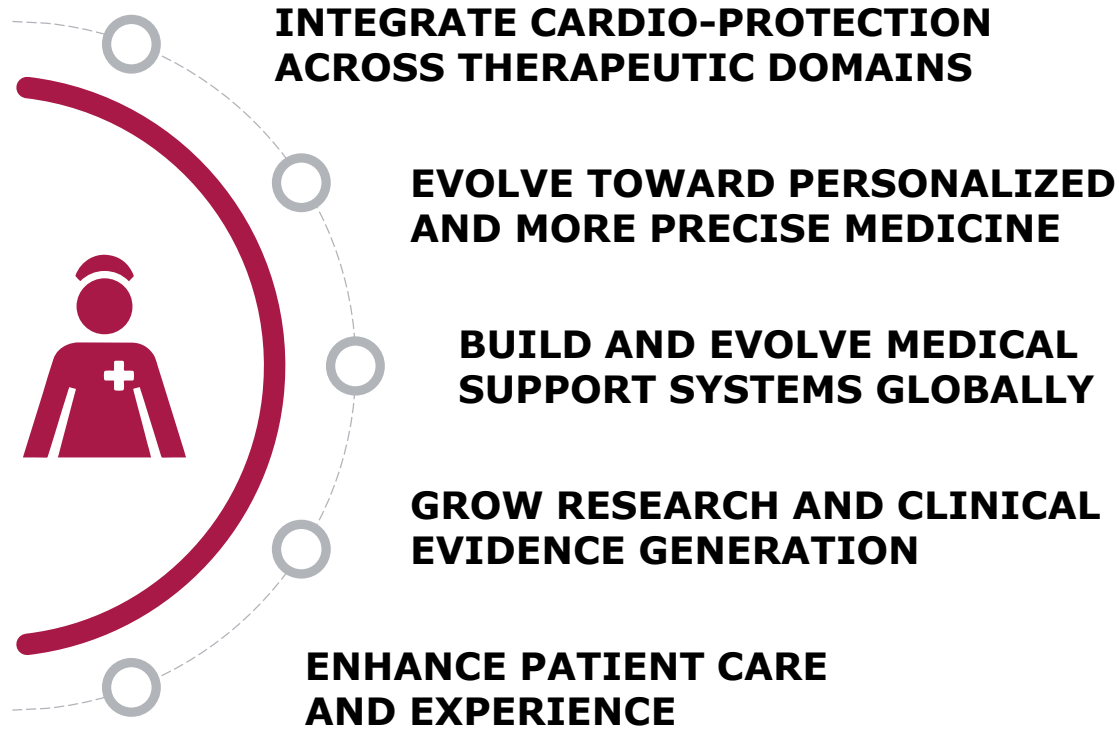
BREAKING DOWN BARRIERS IN THE RENAL CARE CONTINUUM



To provide care for patients throughout the renal care continuum, our product must have an **IMPACT ON MULTIPLE LEVELS.**

To manage challenges of a life with chronic disease, we must **GROW BEYOND RENAL REPLACEMENT THERAPY (RRT).**

STRATEGIC ROADMAP: CLINICAL AND QUALITY AGENDA



Improving patient outcomes
and lowering costs of care

Enhancing quality, safety
and efficiency of care

Supporting sustainable, reliable clinical
care delivery, quality management
and medical communications

Advancing kidney care science

Maximizing patients' power and
choice through coordinated care

ADDRESS DIRECT HEALTHCARE, SOCIAL AND ENVIRONMENTAL NEEDS AND ADVANCE DIAGNOSTICS, THERAPIES AND PAYMENT MODELS TO SUPPORT THE PATIENT'S FULL LIFE JOURNEY.

■ GROWTH POTENTIAL: TRANSLATING SCIENCE INTO MEDICINE

SCIENTIFIC TRANSLATIONAL MEDICINE



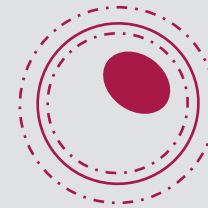
GENETICS



GENOMICS



REGENERATIVE
MEDICINE



BIOENGINEERED
TISSUES

