



Additional Sheet on the use of the multiEffluent Emptying System drain system with the multiFiltrate / multiFiltratePRO devices

Edition: 02A-2022
Date of issue: 2022-07
Part no.: F50008959

This Additional Sheet provides additional information on the use of the multiEffluent Emptying System drain system in conjunction with the multiFiltrate / multiFiltratePRO devices.

The Additional Sheet provides instructions for the operator in order to ensure safe use of the multiEffluent Emptying System drain system together with the multiFiltrate / multiFiltratePRO devices. Irrespective of this Additional Sheet, the Instructions for Use and, in particular, the warnings and precautions stipulated therein must be observed for the multiFiltrate / multiFiltratePRO devices and for the other products used in the therapy.

There is no restriction on the software version for using the multiEffluent Emptying System drain system.

Usability of the multiEffluent Emptying System drain system

The multiEffluent Emptying System drain system must **not** be used if any one of the following circumstances is present:

- The multiEffluent Emptying System drain system is damaged.

Material	Purpose	Property or value
multiEffluent Drain Line	Connects filtrate bag and drain.	Consumable material
multiEffluent Pump	Conveys filtrate from the filtrate bag to the drain.	Battery-operated

Spare parts

Use only spare parts approved by the manufacturer. To identify and order spare parts, test equipment, and tools, always use the electronic Spare Parts Catalog.

The following spare parts are available for the multiEffluent Emptying System drain system:

- Battery
- Charging station with cable
- Power supply unit for charging station

◆ **Additional information for the multiFiltrate / multiFiltratePRO Instructions for Use Chapter 4 – Operation**



Note

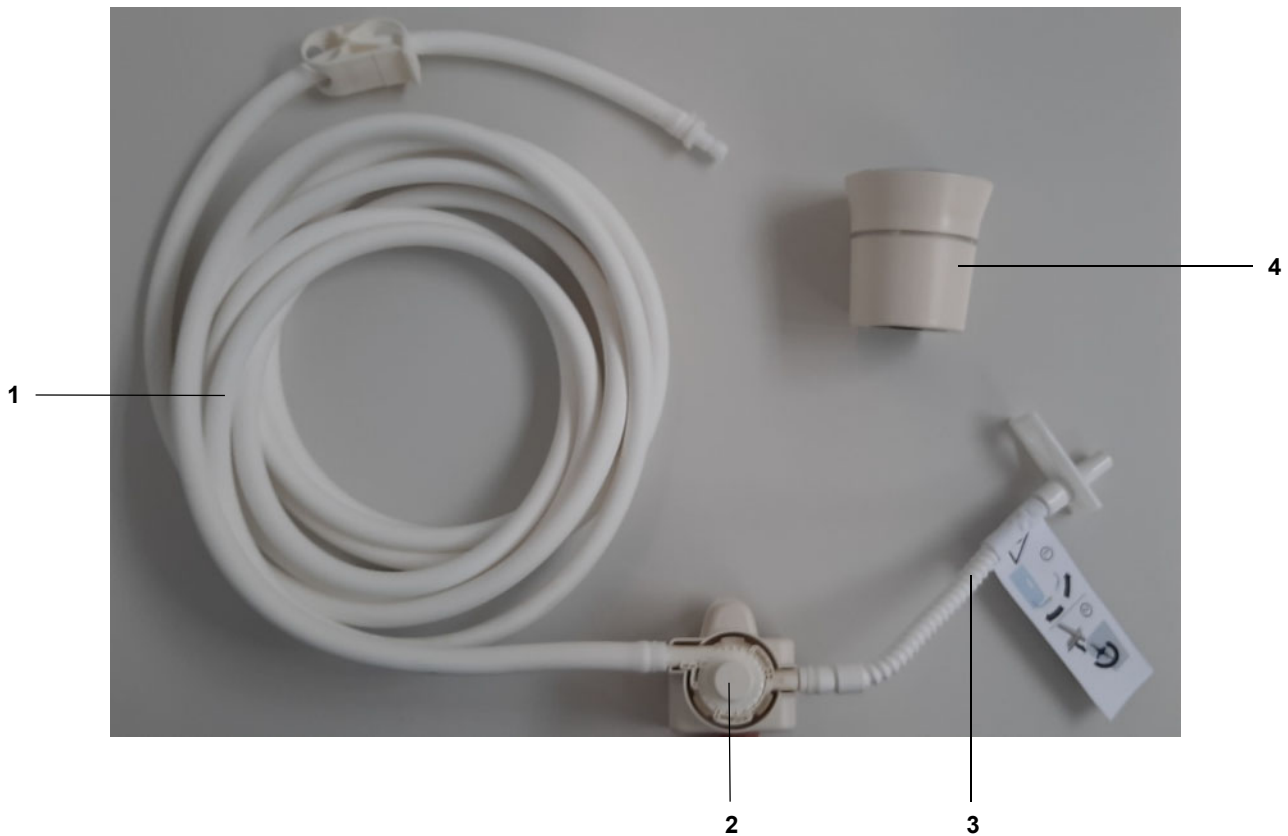
The instructions provide information for connecting the multiEffluent Emptying System drain system. If any discrepancies between the screen display and these instructions are encountered during setup, please follow these instructions.

The instructions show how this is carried out using the multiFiltratePRO as an example. The steps are identical for the multiFiltrate.

The drain line is for single use only (one treatment).

The maximum period of use on a patient is 72 hours.

Overview of the multiEffluent Emptying System drain system



Legend

- 1 Drain line (long tubing)
- 2 Pump head
- 3 Drain line (short tubing with safety label)
- 4 Pump drive

1. Getting the device ready for operation



When getting the device ready for operation, observe the following:

- Check the charge status of the pump drive and charge it for approx. 1.5 hours if it is flashing red.

Red > pump drive battery is empty

Yellow > pump drive battery is weak

Green > pump drive battery is charged.

2. Preparation



-
- Unpack the drain line.

multiFiltrate



- Attach the holder with the pump head to the device.
- Fix the drain line (long tubing) to a suitable drain.

multiFiltratePRO



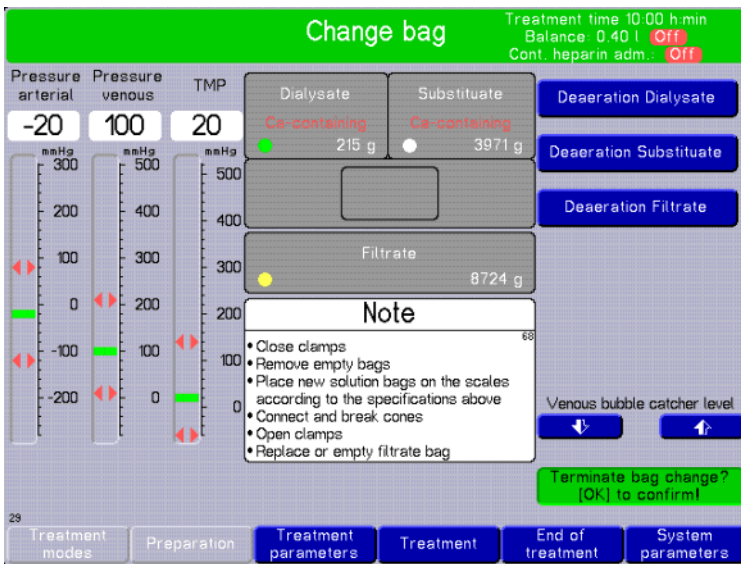
3. Optional: Connecting to Fresenius Medical Care MediaR media supply unit



- Connect to the MediaR media supply unit or to the drain line of another media supply unit.

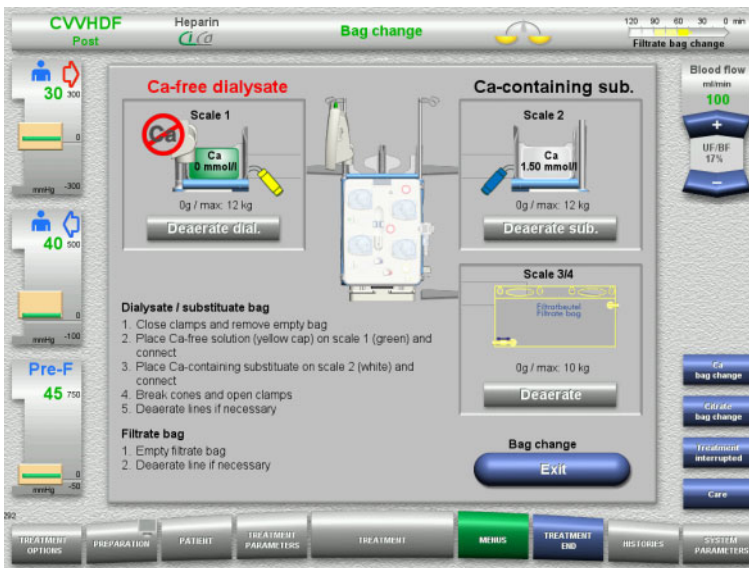
4. Emptying during treatment

multiFiltrate



- Select the **Change bag/Bag change** menu option and start changing the bags.

multiFiltratePRO





Warning

Risk of injury as a result of an electric shock

Increased patient leakage currents may occur as a result of using the multiEffluent Emptying System drain system. To avoid this, observe the following points:

- The filtrate bag must be disconnected from the filtrate line before the drain valve of the filtrate bag is opened.
 - After the filtrate bag is emptied, the multiEffluent Emptying System drain system must be removed from the filtrate bag.
-

4.1 Closing and disconnecting the filtrate line



-
- Close clamps on the filtrate line and filtrate bag.



-
- Disconnect the filtrate line from the filtrate bag.



- Connect the drain line (short tubing) to the filtrate bag outlet.



- Open the occlusion clamp and drain valve. Pump head automatically fills with fluid.



- To activate the pump drive, move the pump drive to activate the integrated movement sensor (LED ring lights up green).
- Attach the pump drive to the pump head. The filtrate bag automatically starts to empty (LED ring lights up blue around the outside).



-
- Wait approx. 1 minute.

The bag automatically stops emptying if air is detected in the pump head (LED ring flashes blue).



-
- Remove the pump drive by pulling it vertically upwards.



-
- Close the occlusion clamp and drain valve.



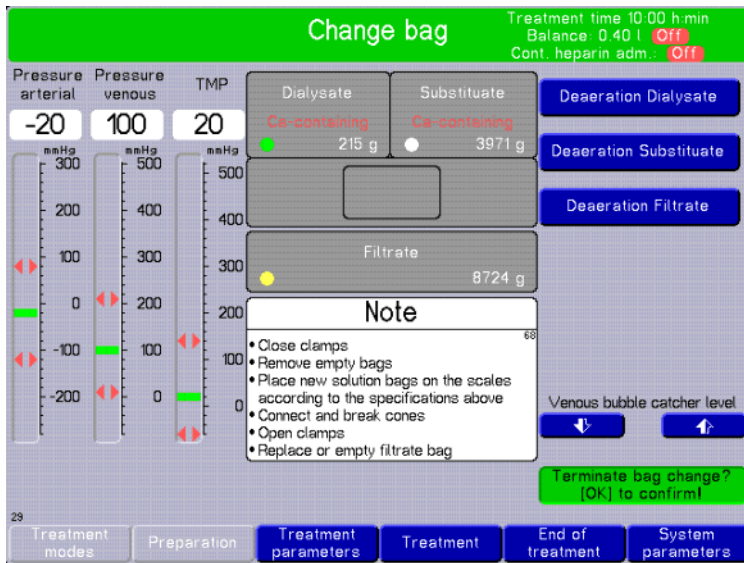
-
- Disconnect the drain line (short tubing) from the drain valve of the filtrate bag.



-
- Connect the filtrate line with the filtrate bag and open the clamps.

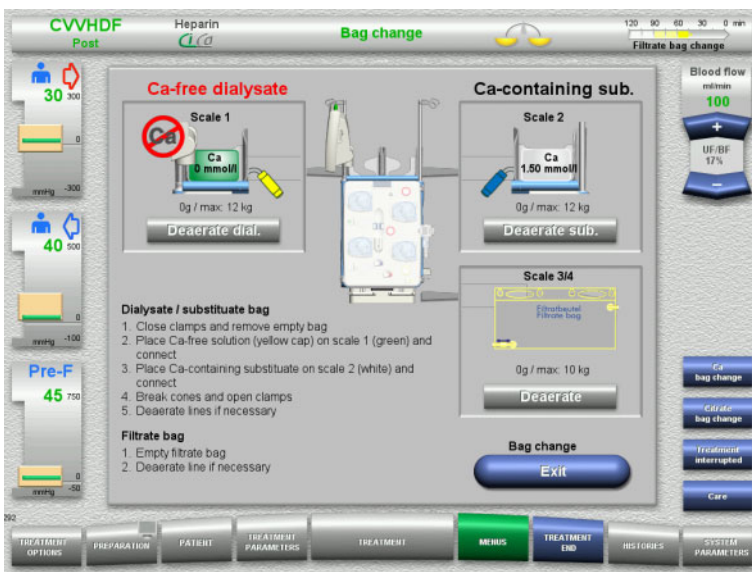
4.2 Terminating bag change

multiFiltrate



➤ Terminate bag change.

multiFiltratePRO



➤ Place the pump drive on the charging station.

5. End of treatment and final bag empty

multiFiltrate



-
- At the end of the treatment, empty the filtrate bag as described starting in Chapter 4.1.

-
- For the multiFiltrate device, remove the holder with the pump head by pulling it vertically upwards.

multiFiltratePRO

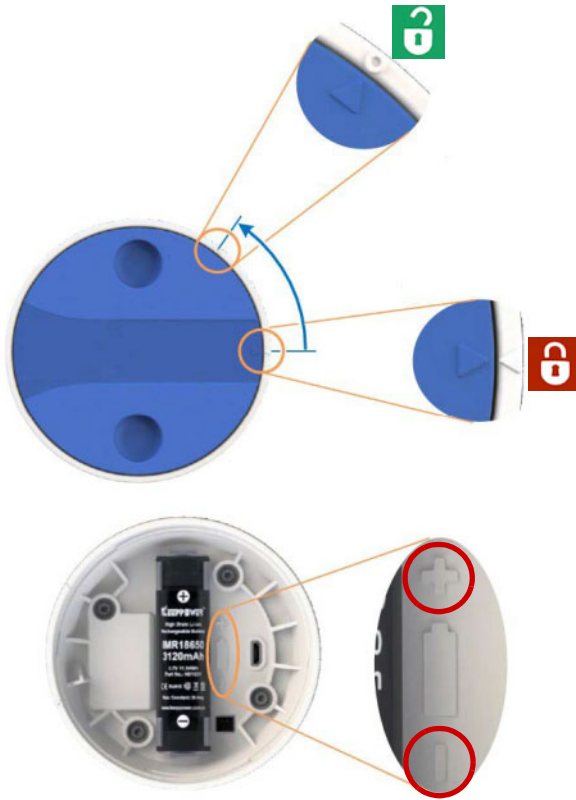


-
- For the multiFiltratePRO device, hold the housing with slight pressure and remove the holder with the pump head in the direction of the arrow.

-
- Dispose of the drain line according to local regulations.

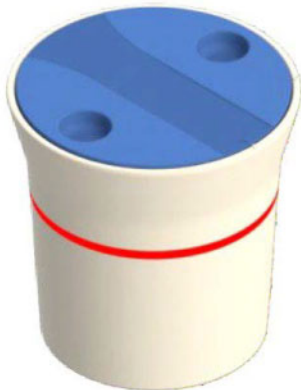
6. Maintenance and troubleshooting

6.1 Exchanging the battery



-
- Only use batteries that have been provided as spare parts by Fresenius. Otherwise, the pump drive may not function correctly or it may even become damaged. Using other batteries can cause personal injury or increase the risk of fire.
 - Observe the polarity (red circles) when inserting the battery into the pump drive.

6.2 Troubleshooting



Errors are indicated by the LED ring flashing red.

Error list:

1. Battery temperature too high
 - Wait until the battery has cooled down to a normal temperature (LED ring no longer flashes red).
2. Battery charge status low
 - Place the pump drive on the charging station.
3. Pump drive not responding
 - Ensure that the pump drive has been activated with a movement before use.
 - Check that the battery is correctly inserted in the pump drive (check polarity).
 - Place the pump drive on the charging station.

